



ZAR DETAILING

📍 Plot No 28/3, Industrial Area Phase II, Chandigarh, 160002

🌐 www.zardetailing.com ✉ info@zardetailing.com

📘 @zardetailing 📷 @zardetailing

☎ Contact: 77078 22222



PRODUCT GUIDE



ZAR DETAILING

ABOUT US

ZAR DETAILING is a project developed with sheer passion for the upkeep and preservation of an asset that one most invaluable possesses - 'A Car'. A car that we buy with a sense of pride, an achievement that we proudly exhibit, and a symbol that signifies prosperity.

This glory however ends up being short-lived as we often ignore the importance of maintaining this asset correctly, which leads to rapid outwear amidst exposure to the external environment such as pollution, UV rays and other contaminants. Therefore, making the car look old and overused due to oxidation of the paint, eventually.

This is where we at ZAR DETAILING come into the picture of resurrection, starting from rectifying imperfections, to enhancing as well as protecting the car, leading to results that would exceed expectations of our prospects. This proficiency is easily achieved by virtue of our existing experience with leading automotive manufacturers, spanning over 32 glorious years under the brand name of Joshi Autozone, a name associated with Excellence, Trust and Commitment. At ZAR DETAILING our constant endeavour is to go end-to-end in terms of providing value addition services to fulfill the increasing demands of the consumer today.

Keeping in view our highest degree of quality control standards, our products have been carefully designed to give an unmatched treatment, that a car truly deserves. Utmost consideration has been given towards curating our treatment packages in order to give an experience that our prospects would not regret.

Scan the following QR codes
to see some of our most recent work:



Facebook



Instagram



HYPER ARMOR

HYPER ARMOR is a hybrid transparent coating that renders high quality shine and protects the vehicle against contaminants that damage the OEM paintwork of the vehicle by forming multiple sacrificial layers above it.



ENRICH

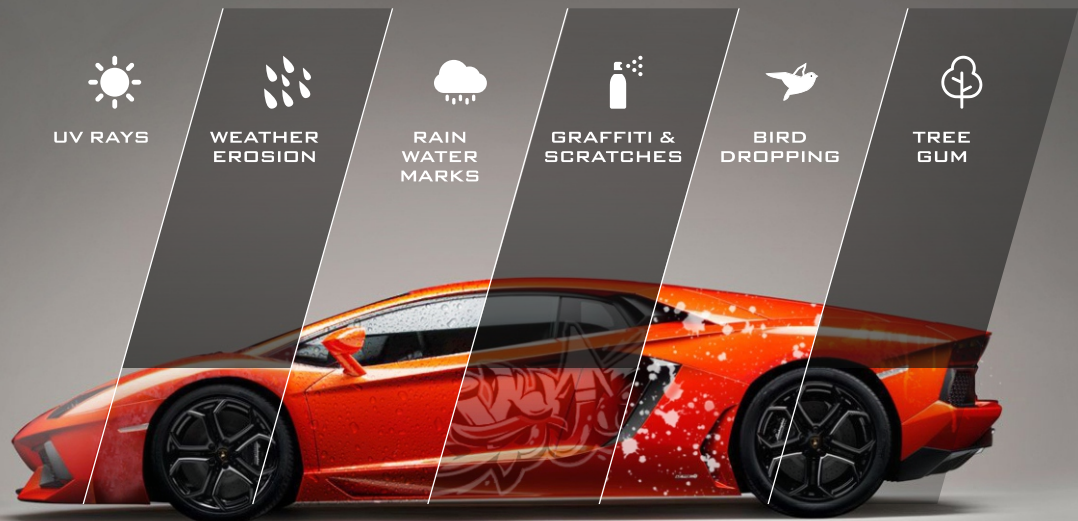
SHIELD

PRESERVE

MODIFY



PROTECTION



ABOVE SURFACE CONTAMINANTS

FRESH BIRD DROPPING	DUST	TREE SAP MIST	INDUSTRIAL FALLOUT	ROAD FILM	OVER SPRAY
●●●●●	●●●●●	●●●●●	●●●●●	●●●●●	●●●●●
HYPER ARMOR					
CLEAR COAT					
BASE COAT					
SUBSTRATE/PRIMER					
BODY PANEL					



COMPARISON

Here's an easy-to-understand graph that shows the difference in protection:

Features	HYPER ARMOR	Regular Wax	Non-Protected
UV Protection	■■■■■	■■■■■	■■■■■
Corrosion Resistance	■■■■■	■■■■■	■■■■■
Scratch Resistance	■■■■■	■■■■■	■■■■■
Durability	■■■■■	■■■■■	■■■■■
Gloss	■■■■■	■■■■■	■■■■■

BENEFITS

9H	9H HARDNESS	🧪	CHEMICAL RESISTANCE
💧	HYDROPHOBIC	💡	HIGH GLOSS FINISH
UV	UV-PROTECTION	🔥	OXIDATION RESISTANCE

ENRICH

SHIELD

PRESERVE

MODIFY



CRYSTAL ARMOR

CRYSTAL ARMOR is a nano-structured hydrophobic barrier for Glass with protective properties that renders improved visibility in adverse weather by restricting the rain water from leaving streaks on the windscreen, impeccable clarity by filling imperfection in the glass and makes cleaning easier.



**EXTREMELY
HYDROPHOBIC**



**SCRATCH &
DIRT RESISTANT**



DURABLE



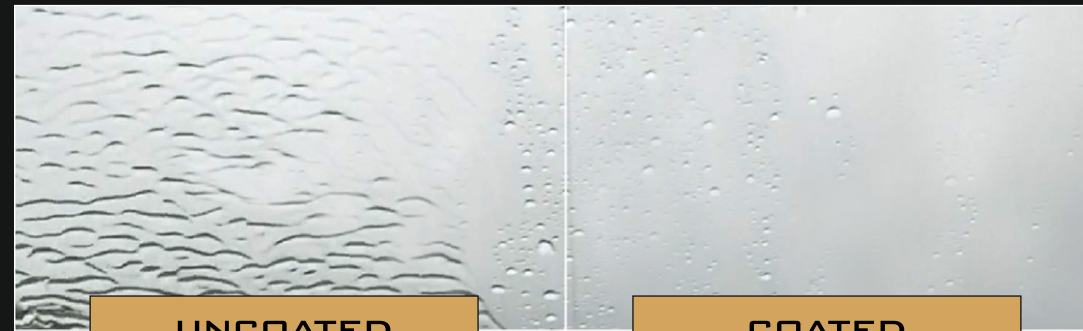
EASY CLEANING



PERFECT CLARITY



**IMPROVED
VISIBILITY**



UNCOATED

COATED

ENRICH

SHIELD

PRESERVE

MODIFY



HYPER BOOST

HYPER BOOST is a spray-on sealant designed to provide a slick, hydrophobic coat that repels water and renders a deep rich gloss. The product is essentially formulated for after-care maintenance and preservation of vehicles treated with HYPER ARMOR. It is an easy to use reloader for both enthusiasts and professionals alike.



BENEFITS



HYDROPHOBIC



HIGH-GLOSS
FINISH



EASY
APPLICATION

UV

UV-PROTECTION



AFTER-CARE
MAINTENANCE



SHORT-TERM
DURABILITY

ENRICH

SHIELD

PRESERVE

MODIFY



FIBER ARMOR






FIBER ARMOR is a nano-structured hydrophobic barrier for interior leather an fabric upholstery that is designed to render protection against stains, UV fading and contamination.



APPLICATION

-  CONVERTIBLE TOPS
-  FABRIC/LEATHER SEATS
-  UPHOLSTERY
-  CARPETS
-  FLOOR MATS

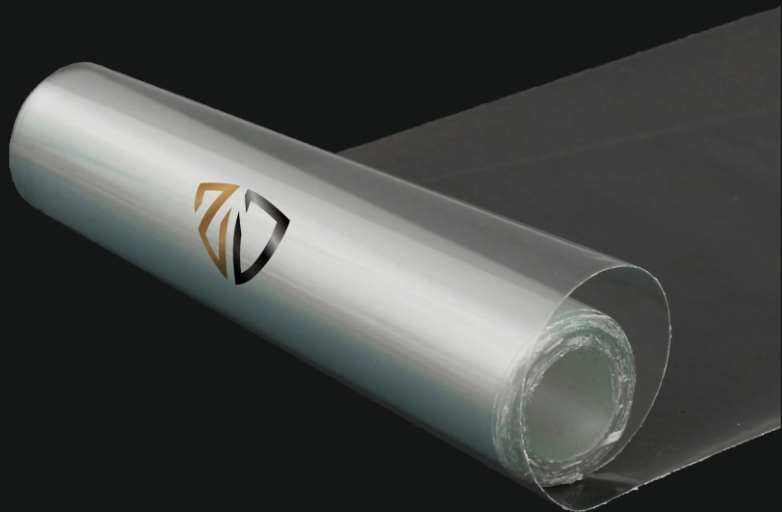
FEATURES

-  HYDROPHOBIC
-  UV-PROTECTION
-  DURABILITY
-  SATIN PROTECTION
-  EASY CLEANING



CLEAR ZAR SHIELD

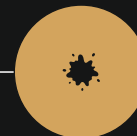
CLEAR ZAR SHIELD is the most advanced super-hydrophobic Paint Protection Film (PPF) that renders unparalleled high-gloss finish along with advanced impact protection for enhanced durability against stone-chips, scratches, abrasions & solvents. Being an advanced Thermoplastic Urethane Film , it acts as a protective shield that keeps the vehicle looking new for a long period.



PROTECTION
AGAINST
ROAD DAMAGE



SELF HEALING
TECHNOLOGY



RESISTANCE
TO STAINS



SURFACE
DURABILITY



HIGH-GLOSS
FINISH

ENRICH

SHIELD

PRESERVE

MODIFY

CLEAR ZAR SHIELD

LEVEL 1

- FRONT & REAR BUMPER



LEVEL 2

- FRONT & REAR BUMPER
- FENDERS ALL SIDES
 - SIDE MIRRORS
 - SIDE SKIRTING



LEVEL 3

- FRONT & REAR BUMPER
- FENDERS ALL SIDES
 - SIDE MIRRORS
 - SIDE SKIRTING
- FRONT HOOD



LEVEL 4

- COMPLETE CAR



ENRICH

SHIELD

PRESERVE

MODIFY

CLEAR ZAR SHIELD



HIGH-GLOSS AND HYDROPHOBIC



ACCIDENTAL DAMAGE PROTECTION

ENRICH

SHIELD

PRESERVE

MODIFY

ZAR PRESERVE

The preservation or after-care of a treated vehicle is the most crucial part in maintaining the integrity of the treatment done on it. These wash plans include all the processes necessary to maintain the longevity of the protective layers.

Furthermore, prevention of damage to the vehicle's paint finish such as scratches, swirl marks and scrapes is duly factored in.

Paying for these Car Wash Plans in advance enables you to make significant savings of upto 50% on standard car wash retail prices, along with complimentary correction treatment based on the package that you choose to buy.



20-STAGE ZAR CLEANING PROCESS

- The vehicle is washed using pH neutral shampoo using pneumatic water spray system to prevent any stones and sharp edges particles being carried onto the car via wash mitt.
- Wheels are cleaned using a non-acidic compounds using specialised horse hair brushes.
- Door Shuts, Hinges, Petrol Cap, Arches and lower section parts will be cleaned (where accessible).
- The vehicle is dried with pressure sensitive pneumatic air-guns and hand mopped using deep-pile micro-fibre towels.
- The vehicles undergoes a treatment of IRON ARMOR to decontaminate the car from all ferrous particles and to dissolve & remove tar, road grime, bug splatter deposits and other petroleum based substances.
- Tyres are dressed.
- Exterior plastics and door trims are dressed.

INTERIOR :

- Carpets are vacuumed.
- Windows cleaned on the inside.
- Interior trims and surfaces are cleaned using high-grade products.

HALF YEARLY TREATMENT :

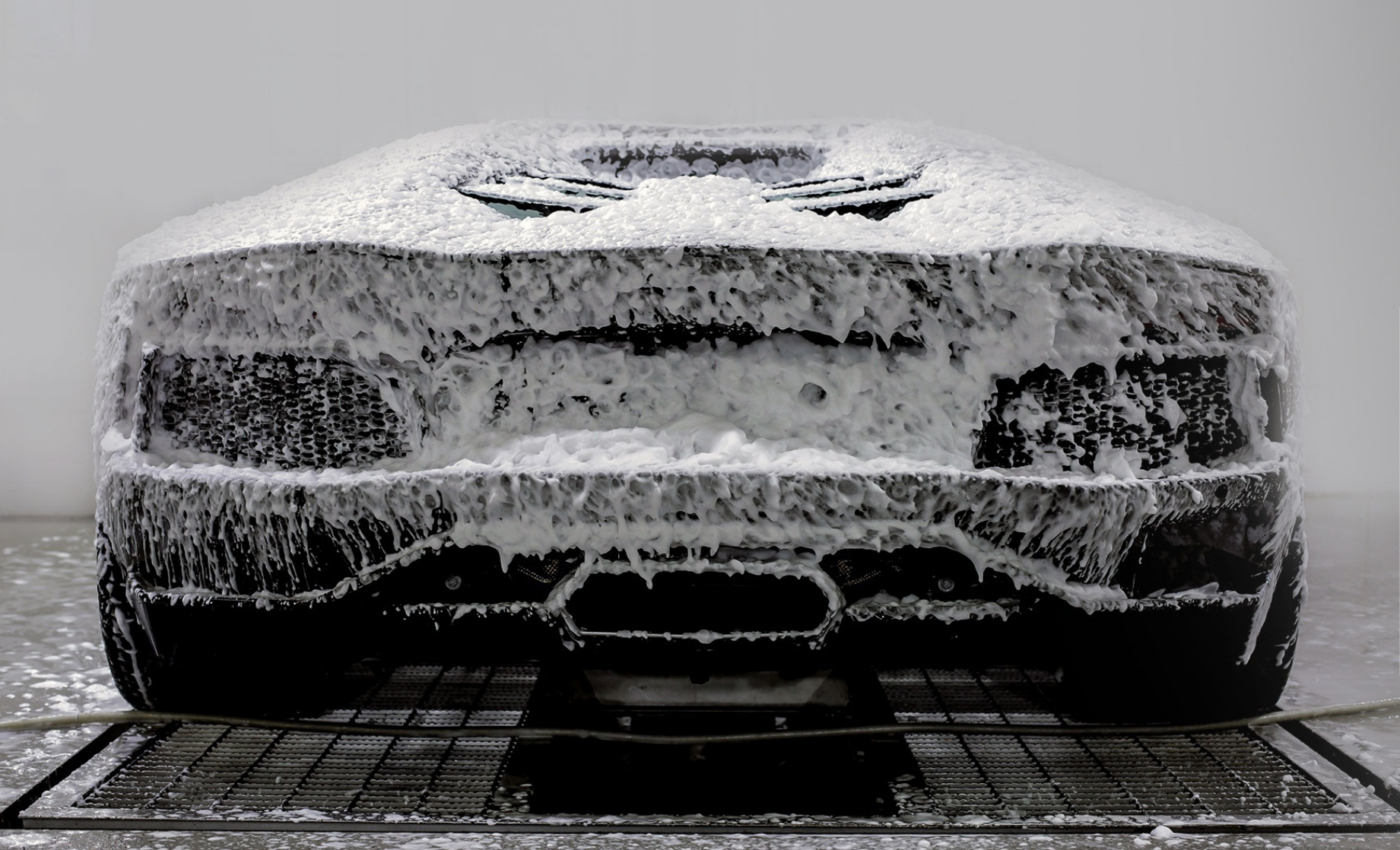
- Vehicle that have not undergone a ceramic coat treatment will be inspected upon thoroughly to assess the condition of the paintwork such as checking for swirl marks, scratches, stone-chips etc. Thereafter, a Polish treatment will be conducted to eliminate any imperfections in the paint, which will be sealed with a high-end carnauba wax.
- Vehicles that have undergone a ceramic coat treatment will undergo a top-up treatment of HYPER BOOST after a thorough paint condition assessment and correction process.

ENRICH

SHIELD

PRESERVE

MODIFY



ZAR PRESERVE

CAR WASH PLANS

6 WASHES
YEARLY PLAN

+

HALF YEARLY
TREATMENT

10,000

12 WASHES
YEARLY PLAN

+

QUARTERLY
TREATMENT

17,000



ZAR SHIELD

ZAR SHIELD takes customised protection to a whole new level. It is the next-gen of Paint Protection Films, which has been liquified into a sprayable Paint. ZAR SHIELD is a product imported from the USA that provides seamless coverage to the surface that is sprayed upon. Unlike the regular vinyl wraps, ZAR SHIELD protects the vehicle against stone chips, scratches, swirl-marks. It can be treated like a regular paint, reworked upon for added gloss & finish and to top it all, it is peel-able!



BENEFITS

- PROTECTS PAINT AGAINST MOISTURE, ACIDS, ABRASION, CORROSION, STONE-CHIPS ETC
- LOOKS & FEELS LIKE PAINT
- REMAINS FLEXIBLE OVER TIME
- WILL NOT CRACK OR BECOME BRITTLE IN EXTREME WEATHER CONDITIONS
- PROVEN IN TEMPERATURES FROM -30°F TO. 200°F
- CAN BE ENHANCED FOR BETTER BETTER CLARITY AND GLOSS
- PEEL-ABLE AND REMOVABLE

ENRICH

SHIELD

PRESERVE

MODIFY

ZAR SHIELD - PEEL-ABLE PAINT



PAINT-LIKE
FEEL & FINISH



DAMAGE-FREE
REMOVAL

